



Three Tree Point Yacht Club

# 2025 RACING HANDBOOK

*2024 Race Boat of the Year*  
**SOLITARE**



# Three Tree Point Yacht Club

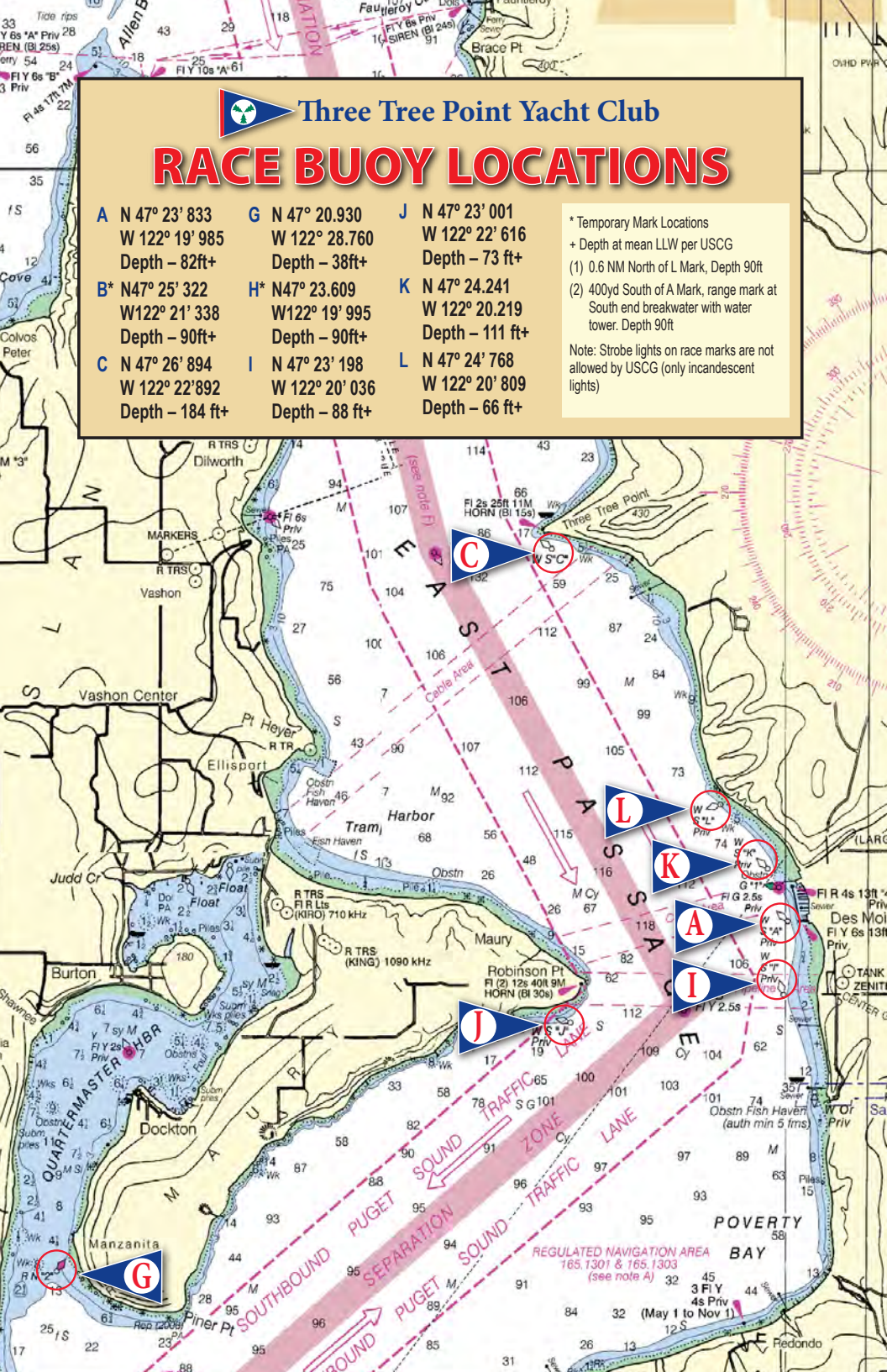
## RACE BUOY LOCATIONS

<b>A</b> N 47° 23' 833 W 122° 19' 985 Depth - 82ft+	<b>G</b> N 47° 20.930 W 122° 28.760 Depth - 38ft+	<b>J</b> N 47° 23' 001 W 122° 22' 616 Depth - 73 ft+
<b>B*</b> N 47° 25' 322 W 122° 21' 338 Depth - 90ft+	<b>H*</b> N 47° 23.609 W 122° 19' 995 Depth - 90ft+	<b>K</b> N 47° 24.241 W 122° 20.219 Depth - 111 ft+
<b>C</b> N 47° 26' 894 W 122° 22' 892 Depth - 184 ft+	<b>I</b> N 47° 23' 198 W 122° 20' 036 Depth - 88 ft+	<b>L</b> N 47° 24' 768 W 122° 20' 809 Depth - 66 ft+

\* Temporary Mark Locations  
+ Depth at mean LLW per USCG

- 0.6 NM North of L Mark, Depth 90ft
- 400yd South of A Mark, range mark at South end breakwater with water tower. Depth 90ft

Note: Strobe lights on race marks are not allowed by USCG (only incandescent lights)



# THREE TREE POINT YACHT CLUB



## 2025 RACE BOOK

P.O. Box 98700  
DES MOINES WA 98198

Incorporated May 20, 1969

©2025 All Rights Reserved

Find TTPYC on:



facebook



Instagram



## GETTING STARTED

YACHT RACING IS A CHALLENGING & EXHILARATING SPORT. IF YOU HAVE NOT PREVIOUSLY RACED, THE FOLLOWING INFORMATION WILL HELP YOU GET STARTED!

*The Three Tree Point Yacht Club Race Fleet Committee constantly strives to provide members and guests with an enjoyable and competitive sailboat racing program. To help achieve this goal, it is necessary to follow the rules and requirements set forth in this race booklet.*

### **Cruising Class for Cruisers**

If you are new to racing, the easiest way to get started is participating in the TTPYC Cruising Class. Contact the TTPYC race fleet captain to help you get started.

Every TTPYC race or series in our race handbook will have a Cruising Class. For all Three Tree Point Yacht Club sponsored races, you need to register on [regattanetwork.com](http://regattanetwork.com), comply with the Racing Rules of Sailing, and have the appropriate safety equipment onboard. See the Safety Equipment and Requirements section below. So please, come join in great Puget Sound sailing!!

### **Crew Opportunities**

If you are not a boat owner and would like to experience racing, signup at: [ttpyc.org/race-crew-form](http://ttpyc.org/race-crew-form). We will find you a boat to crew on, or a spot on the Race Committee boat

administering the race. Previous sailing experience desired, previous racing experience not required.

## **Publications**

Everyone racing needs to be familiar with the following publications:

- The Racing Rules of Sailing (RRS) published by the United States Sailing Association: [www.ussailing.org/competition/rules-officiating/the-racing-rules-of-sailing-2025-2028/](http://www.ussailing.org/competition/rules-officiating/the-racing-rules-of-sailing-2025-2028/)
- The Three Tree Point Yacht Club sailboat racing handbook. This book is updated each year and becomes effective January 1 of the current racing year. One hard copy of this TTPYC handbook is available to members of TTPYC at no cost with additional copies purchased for \$10.00 each. This document can be also be downloaded at: [www.ttpyc.org/racing](http://www.ttpyc.org/racing)

## **PHRF-NW Handicap Rating**

All boats racing in the TTPYC PHRF class must have a current PHRF certificate. See: [phrf-nw.org/](http://phrf-nw.org/) to renew or make application for a rating. The TTPYC handicapper can also assist in the application process.

## **Sail Numbers**

Sail numbers can be obtained from US Sailing at: [www.ussailing.org/competition/offshore/services/sail-number-%20application/](http://www.ussailing.org/competition/offshore/services/sail-number-%20application/)

## **Safety Equipment and Requirements**

TTPYC requires all yachts competing in races to adhere to US Sailing's Safety Equipment Requirements. Boats must comply with Nearshore SER or greater. [www.ussailing.org/competition/%20offshore/safety-information/ser-world-sailing-special-%20regulations/](http://www.ussailing.org/competition/%20offshore/safety-information/ser-world-sailing-special-%20regulations/)

# 2025 RACE FLEET ORGANIZATION

Race Fleet Captain	Michael Hamilton 425-306-7217
Assistant Race Fleet Captain	Andy Norton 206-380-7512
Past Race Fleet Captain	Ross Chamberlain 513-708-5683
Registrar/Scorer	Shelley Conti 253-569-4044
Handicapper	Mark Harang 206-235-5716
PHRF-NW Director	Chris Caudill 734-652-4909
SARC Representative	Ross Chamberlain
Southern Sound Series Council Rep.	Dean Conti
Awards and Trophies	Tom Hubbard

For more up-to-date information, check club's website at:  
[www.ttpyc.org/club-officers](http://www.ttpyc.org/club-officers)



# THE TTPYC RACE CALENDAR IS NOW ONLINE:

— Check these websites links for all TTPYC —  
Race & Cruise Events

**[www.ttpyc.org/race-schedule](http://www.ttpyc.org/race-schedule)**

- Up-to-date Race details to be provided at [ttpyc.org](http://ttpyc.org) under the Race Tab.

**[www.ttpyc.org/cruise-schedule](http://www.ttpyc.org/cruise-schedule)**

- Watch for new social/cruise events in the TTPYC Barnacle & website as they are planned and scheduled, and for up-to date event details.



— Check this website for all Corinthian Yacht Club —  
of Tacoma Races & Events

**[www.cyct.com/racing](http://www.cyct.com/racing)**



— Check this website for all South Sound Series Races —

**[www.sseries.org](http://www.sseries.org)**



– See the 48° North Seattle Area Race Calendar (SARC) –  
for all other races in the Seattle Area

**[www.48north.com/SARC/](http://www.48north.com/SARC/)**



## 2025 TTPYC CALENDAR OF RACE EVENTS

CLUB	RACE/EVENT	DAY	DATE
SSS#1	WINTER VASHON - TYC	Sat	December 7, 2024
SSS#2	DUWAMISH HEAD - TTPYC	Sat	January 4, 2025
CYCT	Harbor Series#1	Sat	January 25, 2025
CYCT	Harbor Series#2	Sat	February 1, 2025
CYCT	Harbor Series#3	Sat	February 8, 2025
SSS#3	TOLIVA SHOAL - SSSS/OYC	Sat	February 15, 2025
SSS#4	ISLANDS RACE - CYCT	Sat	March 15, 2025
CYCT	SPRING SINGLE/DBL HAND	Sat	March 29, 2025
TTPYC	Early Spring Series#1	Thu	April 3, 2025
TTPYC	Early Spring Series#2	Thu	April 10, 2025
TTPYC	Early Spring Series#3	Thu	April 17, 2025
TTPYC	Early Spring Series#4	Thu	April 24, 2025
TTPYC	SPRING REGATTA	Sat	April 26, 2025
TTPYC	Late Spring#1	Thu	May 1, 2025
TTPYC	Late Spring#2	Thu	May 8, 2025
TTPYC	Late Spring#3	Thu	May 15, 2025
TTPYC	Late Spring#4	Thu	May 29, 2025
TTPYC	Early Summer#1	Thu	June 5, 2025
TTPYC	Early Summer#2	Thu	June 12, 2025
CYCT	Lido Regatta (Port Orchard)	Sat&Sun	June 14-15, 2025
TTPYC	Early Summer#3	Thu	June 19, 2025
CYCT	Three Hour Tour#1	Sat	June 21, 2025
TTPYC	Early Summer#4	Thu	June 26, 2025
TTPYC	Late Summer#1	Thu	July 10, 2025
CYCT	Three Hour Tour#2	Sat	July 12, 2025
TTPYC	Late Summer#2	Thu	July 17, 2025
TTPYC	Late Summer#3	Thu	July 24, 2025
TTPYC	Late Summer#4	Thu	July 31, 2025
TTPYC	COMMODORE'S TROPHY	Sat	August 2, 2025
TTPYC	PURSUIT RACE	Sat	August 9, 2025
CYCT	Three Hour Tour#3	Sat	August 9, 2025
CYCT	Vashon Challenge	Sat	August 16, 2025
CYCT	Awards Race and Ceremony	Sat	August 23, 2025
CYCT	Point Series#1	Sat	September 6, 2025
PBR	PINK BOAT REGATTA (Tacoma)	Sat	September 13, 2025
CYCT	Point Series#2	Sat	September 20, 2025
CYCT	Woman's Racing Day	Sat	September 27, 2025
CYCT	MEMORIAL SINGLE/DBL HAND	Sat	October 4, 2025
CYCT	Point Series#3	Sat	October 18, 2025
CYCT	Point Series#4	Sat	November 1, 2025

**IMPORTANT NOTE:** Dates listed above may change without notice.  
An up-to-date Race Calendar may be found at: [www.ttpyc.org/racing](http://www.ttpyc.org/racing)

# TTPYC PERPETUAL TROPHIES

*TTPYC Race Boat of the Year*



*Windward Mark*



*Spring Regatta*



*Commodore's Trophy Race*





## 2024 Perpetual Trophy Winners

# RACE BOAT OF THE YEAR 2024

— SOLITAIRE —

### WINDWARD MARK TROPHY:

<b>Early Spring Series</b>	<b>PHRF</b>	SLICK Paul Grove/Chris Nelson (CYCT)
	<b>CRUISING CLASS</b>	EASY DOES IT Ross Chamberlain (PSSI)
<b>Late Spring Series</b>	<b>PHRF</b>	LES CHEVAUX BLANCS Gordon Murphy (TTPYC)
	<b>CRUISING CLASS</b>	HOBBSES Steve Sisson (TTPYC)
<b>Early Summer Series</b>	<b>PHRF</b>	SOLITAIRE Chris Caudill (TTPYC)
	<b>CRUISING CLASS</b>	ØRN Steve Foss (TTPYC)
<b>Late Summer Series</b>	<b>PHRF</b>	SOLITAIRE Chris Caudill (TTPYC)
	<b>CRUISING CLASS</b>	ENTROPY Derek Richardson

### TTPYC SPRING REGATTA TROPHY:

	<b>PHRF1</b>	SLICK Paul Grove/Chris Nelson (CYCT)
	<b>PHRF2</b>	SOLITAIRE Chris Caudill (TTPYC)
	<b>CRUISING CLASS</b>	ØRN Steve Foss (TTPYC)

**COMMODORE'S TROPHY RACE:**

**PHRF**

**FLICA**

Eric Johnson (CYCT)

**CRUISING CLASS**

**JOYCE MARIE**

Merch DeGrasse (TTPYC)

**AZIMUTH CIRCLE AWARD:**

*2022 Duwamish Head  
Overall winner*

**ANNAPURNA**

*Iain Christenson (SYC)*



## **PART I NOTICE OF RACE OR REGATTA**

### **I-A TITLE, PLACE AND DATES OF RACING EVENTS**

The Three Tree Point Yacht Club sponsors and conducts sailboat races and regattas throughout the year. The name and date of each event is listed in the race calendar at: [ttpyc.org/racing](http://ttpyc.org/racing)

### **I-B RULES**

All TTPYC races and regattas shall be governed by The Racing Rules of Sailing (RRS) 2025-2028 and the prescriptions of US Sailing, this Notice of Race and the Sailing Instructions.

### **I-C TTPYC OFFICIAL NOTICE BOARD**

Race announcements, Sailing Instructions or changes, race results, protest notices and results, and other pertinent information will be posted at: [www.ttpyc.org/racing](http://www.ttpyc.org/racing). Sailing instruction changes will be posted at least 24 hours before the first warning signal of the affected race.

### **I-D ELIGIBILITY**

TTPYC races are open to PHRF, Cruising Classes and One Design Sailboats. All PHRF class participants must be current PHRF-NW members. Boats must have a fixed keel with a LOA of 18' or greater. Cruising class will be non-flying sails. All boats must meet SER Nearshore requirements: [www.ussailing.org/wp-content/uploads/2023/03/Monohull-SER-2023.0-Nearshore.pdf](http://www.ussailing.org/wp-content/uploads/2023/03/Monohull-SER-2023.0-Nearshore.pdf)

### **I-E COURSES**

The race courses will be in the Puget Sound. See [ttpyc.org/race-marks](http://ttpyc.org/race-marks) for the race area and mark descriptions.

## **I-F REGISTRATION AND FEES**

Registration is mandatory for all races. Registration is online through Regatta Network. A link to register for each series or regatta is provided at: [www.ttpyc.org/racing](http://www.ttpyc.org/racing). To receive a score a yacht must be registered. A yacht that registers after the start of a series may still participate. *If you need assistance with registration, contact TTPYC registrar Shelley Conti at 253 569-4044*

## **I-G DECISION TO RACE, RESPONSIBILITY AND ACCEPTANCE OF RULES**

- (1) Each owner and/or skipper assumes responsibility for the yacht and crew. The responsibility for a boat's decision to participate in a race or to continue racing is hers alone. Compliance with RRS3 DECISION TO TACE and RRS 4 ACCEPTANCE OF THE RULES is required
- (2) RRS 56.2 TRAFFIC SEPARATION SCHEMES is changed to:
  - (a) A Traffic Separation Scheme (TSS) shall be understood to mean an area shown on a nautical chart, or in the NOR, as a TSS.
  - (b) While a boat is in a TSS traffic lane, she shall sail a course that is within 100 degrees of the direction of travel in the lane.
  - (c) A boat shall not impede, or present a threat of impeding, the safe passage of a power-driven vessel in a TSS traffic lane.
  - (d) If an official complaint and/or action is lodged against a boat by a commercial,

government, or naval power-driven vessel, by a pilot, by vessel traffic service (VTS), or by other government authority, it shall be presumed that the boat has broken rule 56.2

- (e) The RC will cooperate with and provide relevant information to VTS and/or other governmental authorities regarding investigations of boats impeding a power-driven vessel.
- (3) Vessels may not approach within 200 yards of Southern Resident Killer Whale. Boaters may not position a vessel to be in the path of a southern resident whale at any point located within 400 yards of the whale. This includes positioning a vessel so that the prevailing wind or water current carries the vessel into the path of the whale at any point located within 400 yards of the whale. Boaters are obligated to disengage the transmission of a vessel that is within 200 yards of a southern resident whale and boaters may not feed a southern resident whale.
- (4) Any yacht while racing in violation of any of the above rules and/or regulations are subject to disqualification.

## **I-H SCORING SYSTEM**

- (1) The Low Point Scoring System as defined in the RRS Appendix A shall be used. Rule A5.3 will apply.
- (2) PHRF class will be scored using the Time

on Distance method. Cruising class will be not use handicaps and be scored using elapsed time.

- (3) A boat that came to the starting area and scores DNS, NSC, DNF, DSQ, RET or OCS shall be scored one point more than the number of boats that came to the starting area. (For Regatta Network Scoring, Check-ins +1)
- (4) A boat that did not come to the starting area (DNC), shall be scored one more than the number of boats entered in the series. (For Regatta Network Scoring, Competitors +1).
- (5) When no boat within a class finishes within the time limit, all boats in that class shall be scored DNF and shall be scored one more than the number of boats that came to the starting area. (For Regatta Network Scoring, Checkins+1).
- (6) For a race that is abandoned by the race committee, no yachts shall be scored.
- (7) A boat that does not come to the start area for at least one race in a series shall not be considered for scoring in the series.
- (8) For any series in which five or more races are sailed, the race in which a given yacht has scored the most points shall be eliminated from its total score, (thrown out). If four or fewer races of a series are sailed, the scores of all races shall be counted.
- (9) Scoring Ties: In a series or regatta, in the event of ties between yachts racing in the



same class, the ties will be broken in the following manner:

- (a) Including the points of the thrown out race for the yachts tied.
  - (b) Awarding the best place to the yacht that scored the greatest number of first, seconds, etc. places including throw outs.
  - (c) Awarding the best place to the yacht that most often placed ahead of all the other tied yacht(s). If the yachts remain tied, the tie goes to the yacht which had a shorter corrected time over the entire series.
  - (d) Yachts remaining tied shall score equal points (the tie remains).
- (10) In an individual race, in the event of ties between yachts racing in the same class, the points for the place for which the yachts are tied and for the place immediately below shall be added together and divided equally.
- (11) A boat that serves as Race Committee (RC) during a series in which they are also a racing participant shall receive an "RC" designation in lieu of a DNC. For boats that race in 50% or more of the series' races, scoring for 1 race designated as RC will be calculated upon series completion as the average of the boat's other scores. Otherwise, races designated as RC will be scored as DNS. In the event of a tie, the boat with more non-RC racing participation receives a preferential ranking.

## **I-I AWARDS**

- (1) Awards shall be made for first, second and third place yachts of each class for each individual race or series.
- (2) The following perpetual trophies also shall be awarded:

### **AZIMUTH CIRCLE AWARD -**

Overall PHRF-NW Winner of Duwamish Head Race

### **WINDWARD MARK PERPETUAL TROPHY -**

Winners of each seasonal series

### **COMMODORE'S TROPHY -**

Winners of the Commodore's Trophy Race

- (3) Except for the Azimuth Circle Award, all other perpetual trophies shall be engraved with each class winner. The Azimuth Circle Award shall be engraved with the overall PHRF-NW Speed Potential winner of the Duwamish Head Race.
- (4) In the event protest decisions are pending that could affect the allocation of any award, said award shall be delayed until the matter is duly resolved.
- (5) **The Race Boat of the Year Award** shall be presented to the TTPYC sailing yacht that attains the best race record during the racing season as defined in this paragraph. To be eligible for Race Boat of the Year, the yacht must meet the following requirements:

- (a) A yacht must be registered and rank as a starter in one or more of the races listed below.
- (b) A yacht whose owner is part of a Race Committee, for that race will receive a rank order of 3 or one lower than what a boat that didn't participate would receive, whichever is lower.
- (c) TTPYC Yachts will be scored by assigning a rank order of how each boat finished relative to each other from low to high, a tie would receive an equal ranking for their position. For boats that did not compete in the race will be assigned a rank order of one higher than the last place TTPYC Yacht that participated in that race.

*For example, if 4 TTPYC Yachts competed in a race those 4 Yachts will receive a ranking of 1, 2, 3, 4 (unless there is a tie and those Yachts will receive an equal rank for their position) and say we have a total of 10 Yachts who participated in other races of the season each of those remaining 6 Yachts would be assigned an equal rank of 5 (unless there was a tie, in which case the next higher ranking would be lower) for that race.*



- (d) Each race in the series will be scored separately rather than scoring by the Overall Series ranking. If a particular race is cancelled those races will not be included.
- (e) The Yachts with the lowest average ranking (placement) will be Race Boat of the Year "RBOY". Qualifying races are those races listed below that start between October 1 and September 30:
- ***Southern Sound Series***
  - ***CYCT Harbor Series***
  - ***TTPYC Spring Regatta***
  - ***TTPYC Spring Series***
  - ***TTPYC Summer Series***
  - ***TTPYC Commodore's Race***
  - ***CYCT Point Series races  
that end before September 30  
(typically 1 & 2 of the series)***
- (6) The Race Boat of the Year will be awarded at the annual Change of Watch Banquet.



## **PART II THE SAILING INSTRUCTIONS - GENERAL**

### **II-A STATUS**

These Sailing Instructions are effective for all TTPYC sponsored races and regattas with the exception of the Duwamish Head Race.

### **II-B RULES**

These Sailing Instructions are issued for all TTPYC sponsored and conducted races, unless specifically amended by Race Instructions set forth in Part III of this handbook that are appropriate only to individual races, regattas or series. Additional amendments to both the General and Individual Sailing Instructions may be posted at: [www.ttpyc.org/racing](http://www.ttpyc.org/racing) as prescribed by paragraph I-C of the Notice of Race.

### **II-C ORDER AND DESCRIPTION OF STARTING SEQUENCE**

- (1) The starting sequence is as described in RRS 26.
- (2) The first start will have the class flag of number one pendant; the second start will have the class flag of number two pennant, etc. The race committee may combine or split PHRF, Cruising, and One-design classes under class flags, based on the number of boats and the length of the start line. Class starts will be posted under class start flags on the white start board on the Race Committee boat.
- (3) The Race Committee is urged to use multiple short sound signals one minute prior to the 5 minute warning signal as a round up call to racers.

## **II-D STARTING AREA**

- (1) The starting area is that area within 200 feet either side of the Starting Line and within 200 foot radius of a circle around either end.
- (2) After the Preparatory signal, only those yachts of the class next assigned to start shall be permitted in the Starting Area.
- (3) A yacht in violation of the Starting Area requirements shall be subject to protest by the Race Committee or by another yacht ranking as a starter.

## **II-E START**

The start line is that line of sight between the orange flag (either on the Race Committee boat or on land) and a starting mark designated by the Race Committee for starting purposes.

If any part of a boat's hull, crew or equipment is on the course side at her starting signal and she is identified, the race committee will attempt to hail her on VHF channel 72. Failure to make a broadcast will not be grounds for a request for redress.

## **II-F POSTPONEMENT**

When a start is postponed, use of engine is allowed to return to the starting area prior to that yacht's new start.

## **II-G FINISH LINE**

- (1) The finish line is the line of sight between the orange flag and the finishing mark designated by the Sailing Instructions or the Race Committee.
- (2) In the event the Race Committee Boat is not on station for the finish of any race, the finish line shall be a line extending at right angles to the course

from the last mark and of the shortest practical length. In the absence of the Race Committee a yacht shall take her own finishing time and report it to the Race Committee as soon as possible.

- (3) Finish time shall be submitted by email or phone to the Race Fleet Captain or Race Officer. Boats that fail to file a finish time within 24 hours of their finish time shall be scored DNF.

## **II-H FINISH AREA**

- (1) The finish area is that area within 200 feet of either side of the finish line within a 200-foot radius of either end of the line.
- (2) Yachts finishing shall clear the finish area promptly upon finishing and shall remain clear of the finish area until all other yachts have finished racing. Yachts that violate the finish area after finishing and impede yachts finishing or obscure the Race Committee's view of finishing yachts shall be subject to protest by the Race Committee or by any other yacht racing.

## **II-I PENALTIES**

- (1) RRS 44.1 is changed so that the Two-Turns Penalty is replaced by the One-Turn Penalty.

## **II-J PROTESTS**

- (1) All protests must be made in accordance with the current RRS.
- (2) The Race Committee conducting the race must be informed of the intention to protest and the yacht protested immediately upon finishing, or, if unable

to finish, as soon as possible after the race. If the yacht does not finish, the protest shall be delivered within the time limit for filing a protest.

- (3) RRS pertaining to "Protest Time Limits" is amended to permit a time limit of 24 hours after the finishes of the race, or 48 hours if a Sunday or holiday prevents a postmark within 24 hours of the finish. Protest forms are provided at the back of this book.

**NOTE:** *Protest filings, instead of mailing, may be emailed or hand delivered to Protest Chairman, Race Fleet Captain or Race Officer if delivered within the time limits listed above*

## **II-K USE OF ENGINE**

- (1) Engine use is not permitted after the Preparatory Signal except when permitted by RRS 42.3 or in circumstances stated below. (RRS 42.3i)
- (2) A yacht late for a start may use engine propulsion to traverse a normal direct course from mooring to the nearest edge of the defined Starting Area. If the preparatory signal for her class has been made or the class has already started; then the engine must be stopped and the yacht must permit 4 minutes to elapse before the yacht may start. (changes RRS 42.1)
- (3) A racing vessel's engine may be used to move out of the path of a commercial vessel operating in a Traffic Separation Scheme (TSS) IF there exists a risk of collision or IF the racing vessel presents a threat to the navigation of the commercial vessel. Use of a racing vessel's engine shall be immediately reported to the Race Committee by VHF radio Channel 72. The RC may request a written incident report. The RC may impose a point or time penalty. (changes RRS 42.3g)



- (4) If a commercial vessel sounds five short and rapid blasts on her ship's whistle (COLREGS Rule 34d) then the racing vessel shall take immediate and substantial action to resolve the conflict. The racing vessel's engine may be used to move to a position which allows for the safe passage of the commercial vessel. The racing vessel shall submit a written incident report to the Race Committee before the Protest Deadline. The racing vessel may be subject to disciplinary action up to and including disqualification that is not excludable (DNE). (changes RRS 42.3g)
- (5) Any use of a racing vessel's engine shall be immediately reported to the Race Committee by VHF radio. In no case shall the use of the vessel's engine be used to gain a competitive advantage or to reduce the distance a boat will need to sail to finish the course. If the Race Committee suspects any violation of Fair Sailing (RRS 2) or any Misconduct (RRS 69) the Race Committee is obligated to file a formal protest.

## **II-L WITHDRAWAL FROM RACE**

- (1) Yachts withdrawing from a race for any reason shall promptly notify the Race Committee. Notification shall be made by coming close aboard the Race Committee Boat and hailing until acknowledged, or by calling the race committee on VHF Channel 72 or race fleet officer posted in the front of this book.
- (2) Failure to comply with the foregoing without reasonable cause may result in the yacht being scored DNE. The Race Committee may also take further action where particularly blatant disregard for this report is noted without adequate explanation.

## **I-M RACE COMMITTEE BOAT**

- (1) Any yacht ranking as a starter, or finishing a race, which makes physical contact with the Race Committee Boat, shall be disqualified unless a protest is filed against another yacht asserting that the collision was forced in avoiding collision or injury to persons. In either instance the entire incident shall be a matter for a protest hearing unless the owner or skipper of a particular yacht concedes responsibility. The results of the protest hearing by the TTPYC Protest Committee shall in no way relieve any parties of civil liability for damages and or injuries resulting from the incident.
- (2) The Race Committee Boat will monitor VHF Channel 14 (Vessel Traffic Service) and VHF Channel 16 (US Distress and Calling). VHF calls from the racers to the Race Committee shall be made on Channel 72 to make a report.
- (3) The Race Committee Boat shall be considered as a privileged vessel from departure from its mooring until its return to its mooring.

## **II-N LAGGARD RULE**

The Race Committee may score the last (laggard) boat of a class as finished when that boat cannot correct into a place other than last. The boat will be informed of finishing either by VHF radio or another boat that is designated by the Race Committee. A boat that realizes it cannot possibly finish an individual race in anything other than last may also request Laggard Status. The Laggard Boat shall then proceed by motor to the Starting Area to allow for the timely start of the next race (as applicable).

**II-O SHORTENING COURSES**

The Race Officer may choose at any time after the start to shorten the course. The Code flag "S" will be displayed along with two sound signals on the committee boat. Skippers will then continue to sail the originally posted course, rounding each mark as required until they can lay a course directly to the new finish line and will finish between the Committee Boat in the direction from the last mark.

**II-P RACING SCORING ABBREVIATIONS**

*See RRS Appendix A10 for complete list of abbreviations*

*Race Committee may score a boat:*

<b>DNC</b>	<b>Did Not Compete</b>
<b>DNS</b>	<b>Did Not Start</b>
<b>DNF</b>	<b>Did Not Finish</b>
<b>OCS</b>	<b>On Course Side</b>
<b>NSC</b>	<b>Did Not Sail Course</b>
<b>SCP</b>	<b>Scoring Penalty</b>
<b>RET</b>	<b>Retired</b>

*Only the Protest Committee may score a boat:*

<b>DSQ</b>	<b>Disqualified</b>
<b>DNE</b>	<b>Disqualified not excludable</b>
<b>RDG</b>	<b>Redress Granted</b>
<b>DPI</b>	<b>Discretionary Penalty</b>

## **PART III SAILING INSTRUCTIONS**

### **III-A SOUTHERN SOUND SERIES - NOTICE TO COMPETITORS -**

The South Sound Sailing Society (SSSS) Southern Sound Series (SSS) consists of four races sponsored by different South Puget Sound yacht clubs. Each sponsoring club conducts one race. Series responsibilities (coordination, publicity, scoring, trophies, etc.) are shared on a rotating basis between the clubs. The five sponsoring clubs signed a Letter of Agreement for the Conduct of the Southern Sound Series in the fall of 1979 and Amended October 2024.

#### **Southern Sound Series races are:**

**Vashon Island Race -** Tacoma Yacht Club

**Duwamish Head Race -** Three Tree Point Yacht Club

**Toliva Shoals Race -** South Sound Sailing Society/  
Olympia Yacht Club

**Islands Race -** Gig Harbor Yacht Club

See these web sites below for details:

[www.ssssclub.com/southern-sound-series-racing](http://www.ssssclub.com/southern-sound-series-racing)

[www.tacomayachtclub.org](http://www.tacomayachtclub.org)

[www.ttpyc.org](http://www.ttpyc.org)

[www.theolympiayachtclub.com](http://www.theolympiayachtclub.com)

[www.cyct.com](http://www.cyct.com)

### III-B DUWAMISH HEAD RACE - NOTICE TO COMPETITORS -

See: SSSS-SSS-Racing for SI details  
[www.ssssclub.com/southern-sound-series-racing/](http://www.ssssclub.com/southern-sound-series-racing/)

<b>Eligibility</b>	PHRF, ORC, IRC, ODR, and Cruising	
<b>Start/Finish line</b>	Between the orange flag on the City of Des Moines fishing pier and an orange floating mark offshore	
<b>Course</b>	Starting North bound from the City of Des Moines fishing pier going around the Duwamish Head channel marker, leaving it to port, around Blakely Rock, leaving it to port and finishing South bound at the City of Des Moines fishing pier. Approx distance 30.8 nm	
<b>Race Date</b>	<b>Saturday January 4, 2025</b>	
<b>Start Time</b>	NFS Classes First Warning	09:25
	NFS Classes First Start	09:30
	<i>Rolling 5 minute starts</i>	
	Flying Classes First Warning	09:55
	Flying Classes First Start	10:00
	<i>Rolling 5 minute starts</i>	
<b>Number of Races</b>	One	
<b>Time Limit</b>	None	
<b>Special Instructions</b>	<ol style="list-style-type: none"> <li>1. RRS 56.2 is changed See I-G(2)</li> <li>2. RRS 32.2 is changed See SSS-SI</li> <li>3. II-K Use of Engine is NOT in effect</li> <li>4. II-N Laggard Rule is NOT in Effect</li> <li>5. The green lighted buoy at the end</li> </ol>	
	(CONT.)	

of the DM fishing pier is a limiting mark.

Notice Board [www.ttpyc.org/racing](http://www.ttpyc.org/racing)

Series Entry Fee \$35.00 per series

**III-C SPRING AND SUMMER SERIES  
- RACING INSTRUCTIONS -**

Eligibility PHRF, Cruising, ODR  
*See NOR Section I-D.*

Start/Finish line Between the orange flag on the Committee Boat and start/finish mark.

Course As designated by placards posted on the committee boat.  
*See PART IV MARKS*

Start Time Thursday Evenings:  
First Warning 18:25  
First Start 18:30

Time Limit 3 hours from First Start

Number of Races One or more races per evening.

Special Instructions 1. The "TSS Rule" will be in effect *See I-G(2) & II-K*  
2. The "Laggard Rule" will be in effect. *See II-N.*

Notice Board [www.ttpyc.org/racing](http://www.ttpyc.org/racing)

Series Entry Fee \$35.00 per series

### III-D TTPYC SPRING REGATTA - RACING INSTRUCTIONS -

<b>Eligibility</b>	PHRF, Cruising, ODR <i>See NOR Section I-D.</i>	
<b>Start/Finish line</b>	Between the orange flag on the Committee Boat and start/finish mark.	
<b>Course</b>	As designated by placards posted on the committee boat. <i>See PART IV MARKS</i>	
<b>Race Date</b>	<b>Saturday April 26, 2025</b>	
<b>Start Time</b>	First Warning	09:25
	First Start	09:30
<b>Time Limit</b>	No boat may finish after 16:00 hours	
<b>Number of Races</b>	As many races as possible within the time limit	
<b>Scoring</b>	All races will be scored, unless four or more races are held. In that case a boat's worst score will be thrown out	
<b>Special Instructions</b>	<ol style="list-style-type: none"> <li>1. The "TSS Rule" will be in effect <i>See I-G(2) &amp; II-K</i></li> <li>2. The "Laggard Rule" will be in effect. <i>See II-N.</i></li> </ol>	
<b>Notice Board</b>	<a href="http://www.ttpyc.org/racing">www.ttpyc.org/racing</a>	
<b>Series Entry Fee</b>	\$35.00 per series	

**III-E TTPYC ANNUAL COMMODORE'S  
TROPHY RACE  
- RACING INSTRUCTIONS -**

<b>Eligibility</b>	<i>See TTPYC NOR Section I-D.</i>	
<b>Start/Finish line</b>	Between the orange flag on the Committee Boat and K-Mark.	
<b>Course</b>	K C J K C J K. Leave all marks to port. Approx 18.2 nm. The RC may change the course before the warning flag if conditions dictate. If changed the course will be as designated by placards posted on the committee boat. <i>See PART IV MARKS</i>	
<b>Race Date</b>	<b>Saturday August 2, 2025</b>	
<b>Start Time</b>	First Warning	09:25
	First Start	09:30
<b>Time Limit</b>	No boat may finish after 16:30 hours	
<b>Number of Races</b>	One	
<b>Special Instructions</b>	<ol style="list-style-type: none"><li>1. The "TSS Rule" will be in effect <i>See I-G(2) &amp; II-K</i></li><li>2. The "Laggard Rule" will be in effect. <i>See II-N.</i></li></ol>	
<b>Notice Board</b>	<a href="http://www.ttpyc.org/racing">www.ttpyc.org/racing</a>	
<b>Series Entry Fee</b>	\$35.00 per series	



### III-F TTPYC PURSUIT RACE - RACING INSTRUCTIONS -

<b>Eligibility</b>	US SER Near Shore yachts or better. <i>(See TTPYC Race Book Section I-D).</i> All owners or skippers, regard less of yacht club affiliation, are eligible to register for and participate in the TTPYC Pursuit Race.
<b>Registration Deadline</b>	Entries must be made via Regatta Network by midnight , Wednesday Aug. 6th prior to the event.
<b>Instructions</b>	All boats, regardless of class will start in reverse order based on the Time on Distance pursuit factor. An ad-hoc pursuit factor will be issued as needed for boats without a PHRF handicap. <i>Example: The slowest rated boat(s) will start first and the fastest rated boat(s) will start last. Individual Start Times will be calculated and posted 24 hours prior to the First Start.</i>
<b>Skippers' Meeting</b>	A non-mandatory skipper's meeting will be held on the water using VHF Channel-72 at 09:30 on race day. Detailed race information will be provided at that time. The starting times for each boat will be communicated to the fleet at that time. There will be no communication from the RC regarding individual start times after the First Warning.
<b>Start/Finish line</b>	Between the orange flag on the Committee Boat and K-Mark.

**Course** K C J I K

- (1) See TTPYC Race Book Section IV MARKS
- (2) Leave all marks to port.
- (3) Distance 10.05 nautical miles.
- (4) There is no provision for a shortened course.

**Race Date** Saturday August 9, 2025

**Start Time** First Warning 09:55  
First Start 10:00

**Time Limit** No boat may finish after 17:30 hours

**Number of Races** One

**SPECIAL INSTRUCTIONS**

**Starting** RRS 26 is changed as follows:  
(1) The Number-1 pendant flag will be raised at First Warning and the Number-1 Pendant Flag will be removed at the start for the first boat signaling all boats to pursue that boat. The Race Committee will make no further sound or flag signals during the start sequence except for OCS.  
(2) GPS time is the official time for all starts.  
(3) Use of Spinnaker is not allowed before the Start Signal.

**Delayed Starts** RRS 26 is changed as follows:  
(1) Before the first boat starts, the Race Committee may signal a delay. The Answering Pennant (AP) accompanied by two sound signals will signal a delay.

Each delay will last for 60 minutes. In the case of a delay, all competitors are responsible for adjusting their individual starting times.

(2) There will be no general recalls. Once the first boat has started, there will be NO postponements for any reason.

### **Over-Early Signals**

The Race Committee will signal a boat that prematurely crosses the starting line with a Double Sound Signal and the over-early code flag "X". The "X" flag will be displayed for 5 minutes or until the boat has re-crossed the starting line in the proper direction for the course. When more than one boat is over early at approximately the same time, Code Flag X will be dipped to acknowledge a boat that has restarted correctly then remain flying until all boats have properly started or when 5 minutes has elapsed since the last over-early boat crossed the starting line. It is the responsibility of each boat to verify that they are not over early by watching the committee boat as they start. The Race Committee may attempt to hail an over-early boat via Channel 72, but has no obligation to do so.

### **Finishing**

(1) GPS time is the official time for all finishes.

(2) The Race Committee will endeavor to record finishes and signal them with an audible sound; however, all boats are required to take their own time

and report it via cell phone, text, or e-mail to the TTPYC scorer. In addition to time, finishers shall report the boat finishing immediately ahead and behind them (as applicable): 425-306-7217 or rustygudgeon@gmail.com.

**Protests**

Protests will be resolved before awards are presented. Protest must be filed within 2 hours of the yachts finish. This amends TTPYC II-J(3) rules on protest filing time limits.

**Awards**

Awards will be presented Saturday immediately after racing.

**Regatta Fee**

\$20.00



## PART IV MARKS AND COURSES

### IV-A Courses

Color coded placards will be displayed on the Committee boat for each mark to be rounded, beginning with the starting line and ending with the number of laps to be raced (if greater than 1). The placards will be red if the mark is to be left to port and green if the mark is to be left to starboard. Example: A-L-A 2 (A-L-A all red) Means to start between the Committee boat and mark A, passing buoys A-L-A to port, and go around the course twice.

### IV-B Multiple Courses

In the event two or more courses are to be used, a placard indicating individual classes will precede each of the posted courses.

Example:

SPA	ALIA2
SPB	ALIA
SPC	AKHA2

or

SPA / SPB	ALHA2
SPC	ALHA

### IV-C Racing Marks and Descriptions

*(See racing area chart on back cover for approximate mark locations)*

- A- Permanent TTPYC spar buoy off the southwest corner of Des Moines Marina breakwater
- B- Temporary buoy set approx. 1.5 NM north of fishing pier
- C - Permanent TTPYC spar buoy 0.1 NM south east of Three Tree Point
- G- Red nun buoy in entrance to Quartermaster Harbor
- H - Temporary buoy set 0.2 NM south of "A" mark
- I- Permanent TTPYC spar buoy approx. 1.0 NM south of fishing pier

Three Tree Point Yacht Club

- J- Permanent TTPYC spar buoy set 0.5 NM south west of Pt. Robinson
- K- Permanent TTPYC spar buoy set 0.5 NM north of "A" mark and 400 yards north of the fishing pier.
- L- Permanent TTPYC spar buoy approx. 0.7 NM north of fishing pier

**IV-D Buoy Distances**

Official Course Distances in Nautical Miles.

Course NM	Course NM	Course NM	Course NM
<b>A - B</b> 1.8	<b>B - C</b> 1.7	<b>C - I</b> 4.3	<b>H - L</b> 1.3
<b>A - C</b> 3.6	<b>B - H</b> 2.0	<b>C - J</b> 3.95	<b>I - J</b> 1.8
<b>A - H</b> 0.2	<b>B - I</b> 2.8	<b>C - K</b> 3.1	<b>I - K</b> 1.2
<b>A - I</b> 0.7	<b>B - J</b> 2.5	<b>C - L</b> 2.5	<b>I - L</b> 1.8
<b>A - J</b> 2.0	<b>B - K</b> 1.3	<b>H - I</b> 0.5	<b>J - K</b> 2.05
<b>A - K</b> 0.5	<b>B - L</b> 0.7	<b>H - J</b> 2.0	<b>J - L</b> 2.52
<b>A - L</b> 1.1	<b>C - H</b> 3.8	<b>H - K</b> 0.7	<b>K - L</b> 0.6



## IV-E Buoy Locations

Location in GPS format of DD° MM.MM

<b>A</b> N 47° 23' 833 W 122° 19' 985 Depth – 82ft++	<b>L</b> N 47° 24' 768 W 122° 20' 809 Depth – 66 ft++
<b>C</b> N 47° 26' 894 W 122° 22' 892 Depth – 184 ft++	<b>B*</b> N47° 25' 322 W122° 21' 338 Depth – 90 ft+
<b>K</b> N 47° 24' 241 W 122° 20' 219 Depth –111 ft++	<b>G</b> N 47° 20.930 W 122° 28.760 Depth – 38 ft+
<b>I</b> N 47° 23' 198 W 122° 20' 036 Depth – 88 ft++	<b>H*</b> N47° 23.609 W122°19' 995 Depth – 90 ft+
<b>J</b> N 47° 23' 001 W 122° 22' 616 Depth – 73 ft++	<b>NOTE:</b> Strobe lights on race marks are not allowed by USCG (only incandescent lights)

\* *Temporary Mark Locations*

+ *Depth at mean LLW per USCG*

++ *Depth at mean LLW per TTPYC*

(1) *0.6 NM North of L Mark, Depth 90ft*

(2) *400yd South of A Mark, range mark at South end breakwater with water tower. Depth 90ft*





## ***Race Committee has its privileges!***

TTPYC racing doesn't occur without a Race Committee. While this seem to be a thankless job, there are many benefits:

- **Pay:** Well...none but the ultimate satisfaction of volunteering and the gratitude of all participants.
- **Working Environment:** Incredible sunsets with a "fair to great chance" of inclement weather. However, there is a LOT less yelling and cursing involved compared to racing!
- **Fun:** Unmeasurable amounts!
- **Age Requirements:** Some say active AARP card is essential; that is a falsehood. You just need to be old enough to raise your hand when asked to volunteer. Having a boat also helps.
- **Action:** Guaranteed! – RC has the best vantage point to view mark roundings; exceptional boat tactics; watch sail trim and a birds-eye view of sailboat handling at its best!

If called upon, please consider saying "**Yes**" to being RC for a day. Also, remember to give a wave and a hardy "**Thank You RC**" when you finish.



**Race Protest Form**

Protest Lodged By: \_\_\_\_\_ Sail #: \_\_\_\_\_  
 Class: \_\_\_\_\_ Date: \_\_\_\_\_  
 Race Name: \_\_\_\_\_ Sail #: \_\_\_\_\_  
 Time of Incident: \_\_\_\_\_  
 Against: \_\_\_\_\_  
 Whereabouts of Incident: \_\_\_\_\_  
(Attach statements of the facts, including details of incident. Failure to comply may result in protest.)  
 Rule or rules considered infringed: \_\_\_\_\_  
 Wind direction: \_\_\_\_\_ Strength: \_\_\_\_\_  
 Tide direction: \_\_\_\_\_ Strength: \_\_\_\_\_  
 Water depth (if relevant): \_\_\_\_\_  
 Time Protest Flag was flown: \_\_\_\_\_ Zip: \_\_\_\_\_  
 Signed: \_\_\_\_\_  
 Address: \_\_\_\_\_  
 Phone: \_\_\_\_\_  
 Yacht Club Affiliation: \_\_\_\_\_  
 Witness 1: \_\_\_\_\_  
 Witness 2: \_\_\_\_\_

## DIGITAL RACE PROTEST FORM

Protests can be filled out online:  
[tppyc.org/race-protest-form](http://tppyc.org/race-protest-form)

### INSTRUCTIONS FOR FILLING OUT YOUR PROTEST:

1. Accept the terms of the document by clicking "**Continue**"
2. **Type in your information** to complete the form
3. **Click on Submit:** this step will email a pdf of your completed protest form to you.
4. **FINAL STEP!:** Forward the emailed pdf to TTPYC's Race Fleet Captain at: [Roscoe767@yahoo.com](mailto:Roscoe767@yahoo.com)

Subject line: **PROTEST**

## **SUBMITTING A PRINTED RACE PROTEST FORM**

If you prefer, you can submit a Race Protest Form using the forms found on the following pages (we suggest making a copy of a form to fill out); complete the form & Mail to:

**ATTN.: PROTEST**  
TTPYC  
PO BOX 98700  
DES MOINES, WA 98198



# Race Protest Form

Protest Lodged By: \_\_\_\_\_

Class: \_\_\_\_\_ Sail #: \_\_\_\_\_

Race Name: \_\_\_\_\_ Date: \_\_\_\_\_

Time of Incident: \_\_\_\_\_

Against: \_\_\_\_\_ Sail #: \_\_\_\_\_

Whose helmsman  I have  have not informed. (check one)

Whereabouts of incident: \_\_\_\_\_

*(Attach statement of the facts, include sketch of incident. Failure to comply may invalidate protest.)*

Rule or rules considered infringed: \_\_\_\_\_

Wind direction: \_\_\_\_\_ Strength: \_\_\_\_\_

Tide direction: \_\_\_\_\_ Strength: \_\_\_\_\_

Water depth (if relevant): \_\_\_\_\_

Time Protest Flag was flown: \_\_\_\_\_

Signed: \_\_\_\_\_

Printed: \_\_\_\_\_

Address: \_\_\_\_\_ Zip: \_\_\_\_\_

Phone: \_\_\_\_\_

Yacht Club Affiliation: \_\_\_\_\_

Witness 1: \_\_\_\_\_

Witness 2: \_\_\_\_\_

Witness 3: \_\_\_\_\_

Additional Space: \_\_\_\_\_

\_\_\_\_\_  
\_\_\_\_\_  
\_\_\_\_\_

**MAIL TO:** **ATTN.: PROTEST**  
TTPYC  
PO BOX 98700  
DES MOINES, WA 98198

**FOR PROTEST COMMITTEE USE ONLY**

Protest Flag seen by: \_\_\_\_\_ at: \_\_\_\_\_ (time)

Received by Protest Committee: \_\_\_\_\_ (date) \_\_\_\_\_ (time)

**FACTS FOUND**

---

---

---

---

---

---

---

Rule(s) Judged Applicable: \_\_\_\_\_

Right of Way Yacht: \_\_\_\_\_

**DECISION & GROUNDS for DECISION**

---

---

---

---

---

---

---

Signed: \_\_\_\_\_ Date: \_\_\_\_\_

*(Chairman)*

Additional Space:

---

---

---

---

---

---

---

---

---

---

---

# Race Protest Form

Protest Lodged By: \_\_\_\_\_

Class: \_\_\_\_\_ Sail #: \_\_\_\_\_

Race Name: \_\_\_\_\_ Date: \_\_\_\_\_

Time of Incident: \_\_\_\_\_

Against: \_\_\_\_\_ Sail #: \_\_\_\_\_

Whose helmsman  I have  have not informed. (check one)

Whereabouts of incident: \_\_\_\_\_

*(Attach statement of the facts, include sketch of incident. Failure to comply may invalidate protest.)*

Rule or rules considered infringed: \_\_\_\_\_

Wind direction: \_\_\_\_\_ Strength: \_\_\_\_\_

Tide direction: \_\_\_\_\_ Strength: \_\_\_\_\_

Water depth (if relevant): \_\_\_\_\_

Time Protest Flag was flown: \_\_\_\_\_

Signed: \_\_\_\_\_

Printed: \_\_\_\_\_

Address: \_\_\_\_\_ Zip: \_\_\_\_\_

Phone: \_\_\_\_\_

Yacht Club Affiliation: \_\_\_\_\_

Witness 1: \_\_\_\_\_

Witness 2: \_\_\_\_\_

Witness 3: \_\_\_\_\_

Additional Space: \_\_\_\_\_

\_\_\_\_\_  
\_\_\_\_\_  
\_\_\_\_\_

**MAIL TO:**    **ATTN.: PROTEST**  
TTPYC  
PO BOX 98700  
DES MOINES, WA 98198

**FOR PROTEST COMMITTEE USE ONLY**

Protest Flag seen by: \_\_\_\_\_ at: \_\_\_\_\_ (time)

Received by Protest Committee: \_\_\_\_\_ (date) \_\_\_\_\_ (time)

**FACTS FOUND**

---

---

---

---

---

---

---

Rule(s) Judged Applicable: \_\_\_\_\_

Right of Way Yacht: \_\_\_\_\_

**DECISION & GROUNDS for DECISION**

---

---

---

---

---

---

---

Signed: \_\_\_\_\_ Date: \_\_\_\_\_

*(Chairman)*

Additional Space:

---

---

---

---

---

---

---

---

---

---

---

---